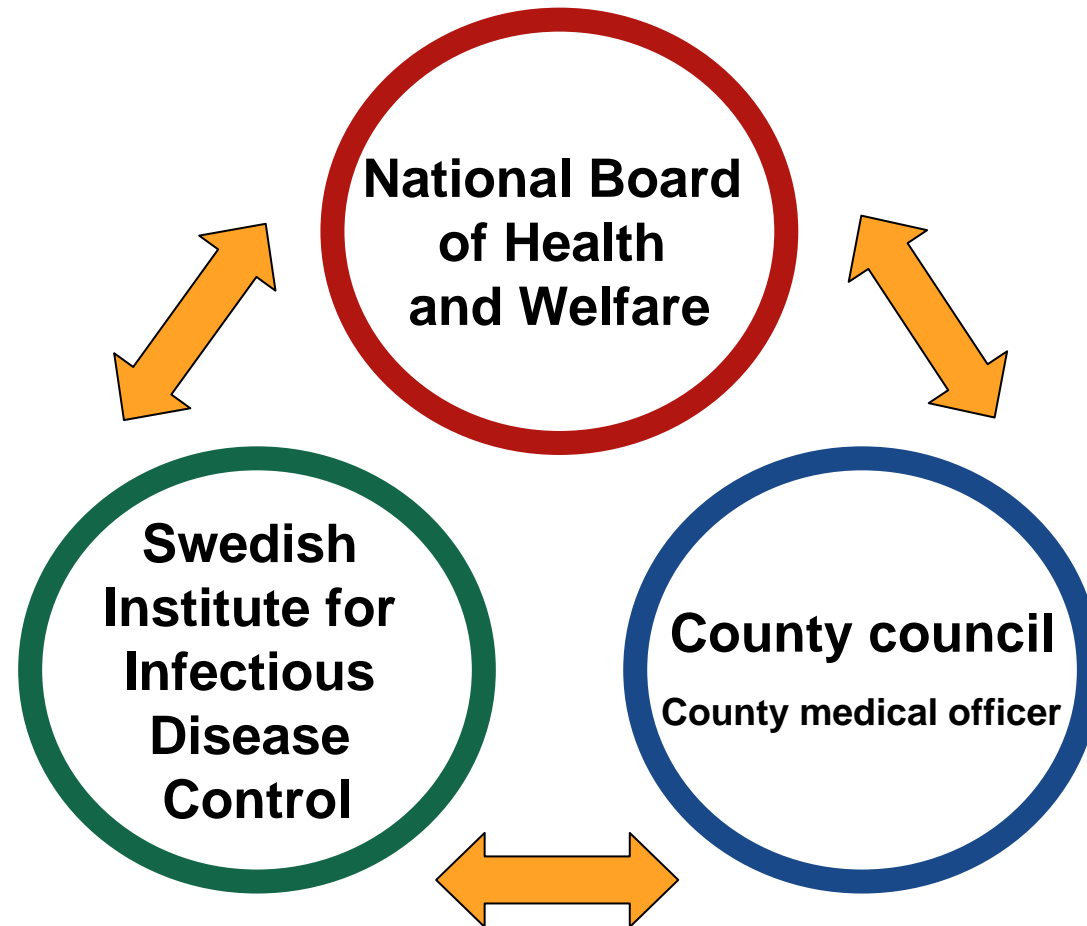


The National Board of Health and Welfare



Communicable disease prevention and control in Sweden



National agencies cooperate

The National Pandemic Group:

- National Board of Health and Welfare (SoS)
- Swedish Institute for Infectious Disease Control (SMI)
- Swedish Civil Contingencies Agency (MSB)
- Swedish Work Environment Authority
- Medical Products Agency
- Swedish Association of Local Authorities and Regions

And if they are needed

- National Food Administration
- National Police Board
- Swedish Transport Agency
- Swedish Board of Agriculture
- National Veterinary Institute

National agency field of responsibility (1/2)

- **The National Board of Health and Welfare (SoS)** has different duties within the fields of social services, health and medical services, environmental health, communicable disease prevention and control. The National Board of Health and Welfare co-ordinate, develop and follow up the communicable disease prevention and control at national level, and co operate with ECDC and WHO
- **The Swedish Institute for Infectious Disease Control (SMI)**, is a governmental expert agency, that monitor the epidemiological situation for infectious diseases in humans. It is also responsible for promoting protection against such diseases.
- **The Swedish Civil Contingencies Agency (MSB)** is new authority responsible for all work related to public safety, emergency management, and civil defence. They work for strong civil protection and good emergency preparedness in which everyone shares responsibility.

National agency field of responsibility (2/2)

- **The Swedish Work Environment Authority** is the administrative authority for questions relating to the working environment.
- **The Medical Products Agency (MPA)** is the Swedish national authority responsible for regulation and surveillance of the development, manufacturing and marketing of drugs and other medicinal products.
- **The County Administrative Board** is a government authority that exists in each county. Sweden comprises 21 counties. The County Administrative Board co-operates with different bodies on the local, regional and central level to create a secure, safe society. During an emergency the County Administrative Board will provide support and co-ordinate authorities, organisations and key companies in the community that work together.

Local Authorities and Regions

Field of responsibility

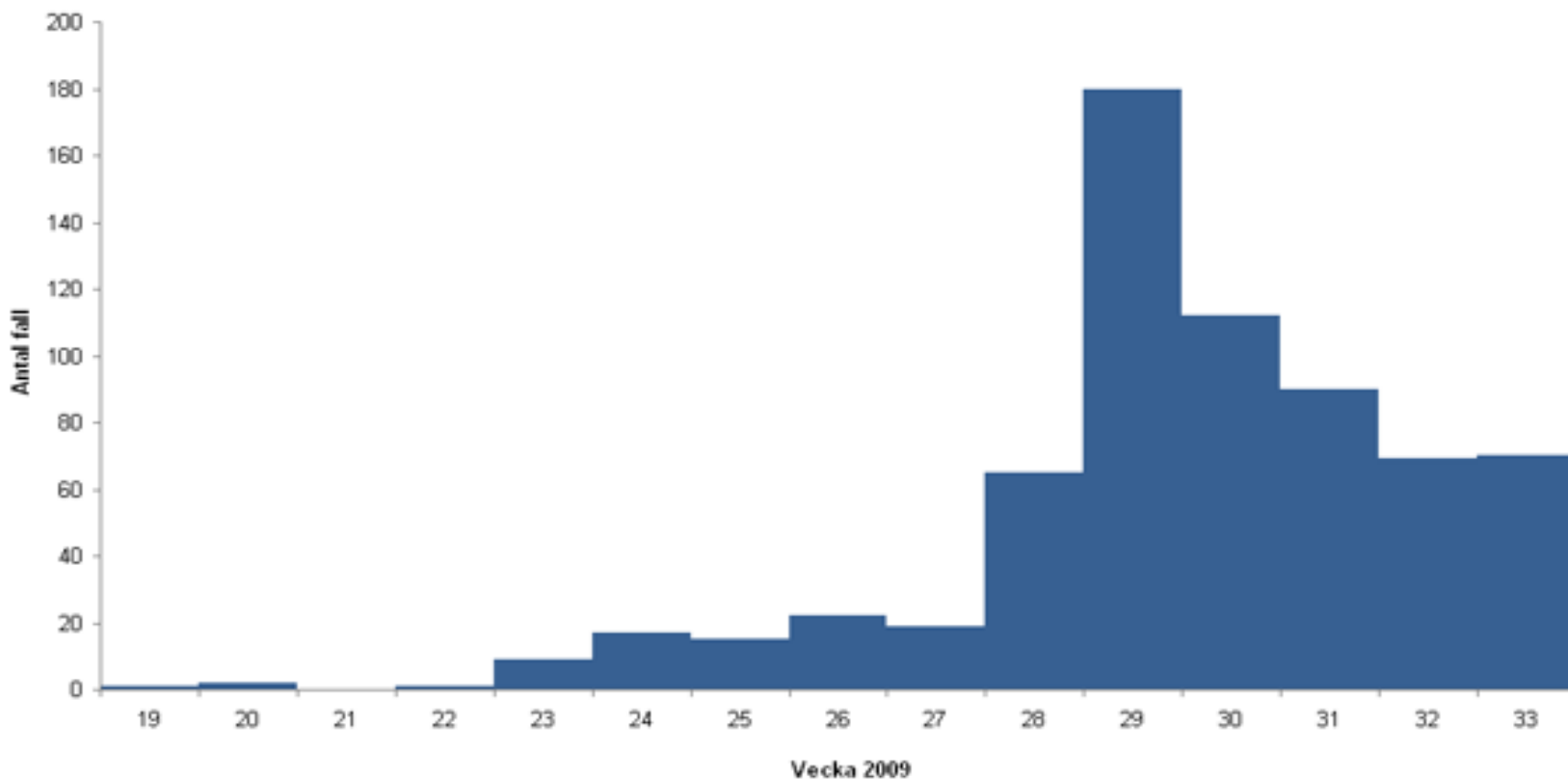
- **The County Councils** are responsible for overseeing tasks that cannot be handled at the local level by municipalities but require coordination across a larger region, most notably health care.
- **The municipalities**, Sweden's 290 municipalities are responsible for a large share of public services. The municipalities are service providers in the fields of care, social services, education and infrastructure.
- **The Swedish Association of Local Authorities and Regions** is an organisation whose main objective is to safeguard the interests of the municipalities and the county councils.

Legislatively-based measures

- A change in the Communicable Diseases Act the 15th of May make the pandemic influenza A(H1N1) a disease dangerous to public health. This make the influenza a notifiable diseases and a subject to contact tracing.
- From May until middle of July was contact tracing made for all confirmed cases
- A new change the 16th of July limited the notification to only be for cases that are treated in hospitals or from laboratories analysing the tests.
- This was due to the change of strategy from containment to mitigation.

Confirmed cases of pandemic H1N1

Influensa A(H1N1)v
Antal fall rapporterade per vecka, v 19-33, 2009 (n=672)



Surveillance

- Notification of hospitalised cases and laboratory confirmed cases
- Sentinel system, approximately 100 primary care doctors report every week patients with influenza like symptoms
- Sentinel tests, some days in the week are specimens taken and analysed for influenza (not only A(H1N1))
- Volunteer based system to report self diagnosed cold and flu, 12500 persons participate in Stockholm County

Information and communication

- Nearly all information about the pandemic influenza A(H1N1) are produced in co-operation of various authorities, this make it possible to have a co-ordinated message to the public.
- A joint information site on internet, www.krisinformation.se
- A joint call centre with information to the public open the 4th of May
- Strategy document about contingency planning for prevention and control of influenza are revised and published 25th of May

Information to the public

- Information posters in airports and passenger ports 4th of May
- Information poster "How to avoid infection and infecting others" in 17 different languages (July)
- Information posters and checklists to staff and children in schools and kindergartens

Den nya influensan
Undvik att smittas och att smitta andra

Tvätta händerna ofta
Tvätta bort influensavirus som lätt fastnar på fingrar och på ytor som dörrhandtag, och som kan spridas vidare när du tar i hand. Använd eväl och vatten. Med handsprit får du bort ännu mer virus efter handtvätten.

Hosta och nys i armvecket
Fånga upp virus genom att hosta och nysa i armvecket eller i en pappersnäsduk som du slänger direkt i soporna. Undvik att täcka munnen med handen när du nysar eller hostar.

Om du är sjuk, stanna hemma
Stanna hemma om du är sjuk så sprider du inte influensavirus vidare på arbetet, skolan eller bussen. Kontakta sjukvården per telefon istället för att gå direkt till våtrum där influensa lätt sprids vidare.

Den nya influensan A(H1N1) är ett nytt influensavirus som sprids över världen. För de allra flesta är det en ofarlig men ibland obehaglig sjukdom med symtom som går över på några få dagar: Fieber, smärtsa, halsont, ont i kroppen, huvudvärk, frösta, snuva och en våldig trötthet är vanliga symtom vid influensa. Det är viktigt att hindra smittspridningen för att skydda dem som kan bli allvarigt sjuka av influensa.

Mer information om den nya influensan A(H1N1) finns på www.1177.se och www.krisinformation.se

Socialstyrelsen SMITTSKYDDINSTITUTET 1177

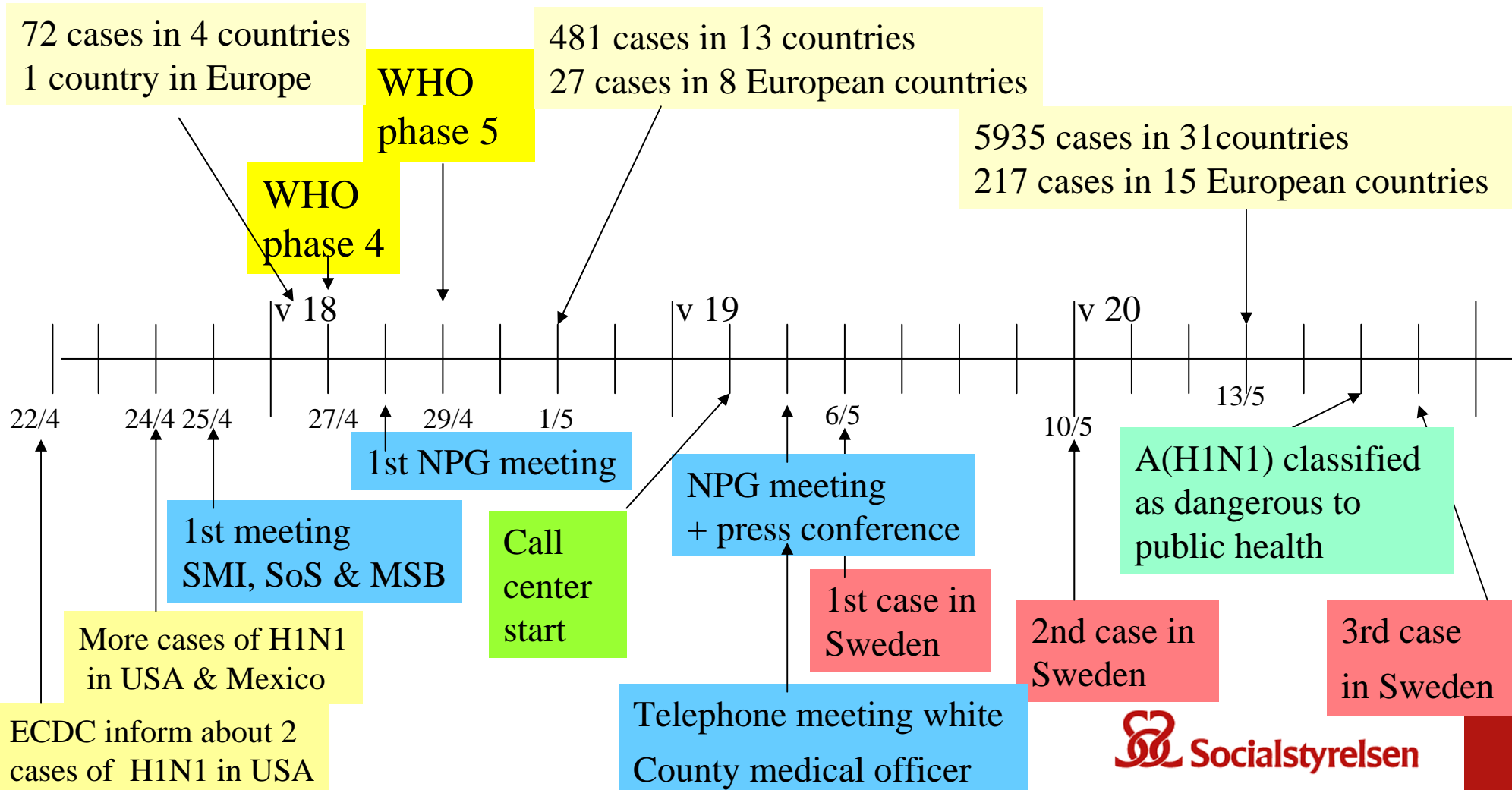
Information to the health care

- Regular telephone meetings with the County medical officer, at least every 14 day
- Guiding principles for the care of suspected cases of the pandemic A(H1N1) for the health care. First published 5th of May and it has been modified several times
- Educational material for health care staff as a Power point with manual (24/7)
- Recommendation about the vaccination and strategy to the county councils with defined risk groups published 20th of August

Vaccine and Antiviral Drugs

- Sweden suborder 18 million doses of pandemic vaccine the 22nd of June according to settlement with Glaxo Smith Kline (GSK) from 2007
- GSK will start to deliver the vaccine in the end of September
- The County council are responsibly to perform the vaccination and are now preparing for it
- Restrictive use of antiviral as prophylaxis
- Contingency storage of antiviral drugs

Pandemic influenza A(H1N1) week 18-20

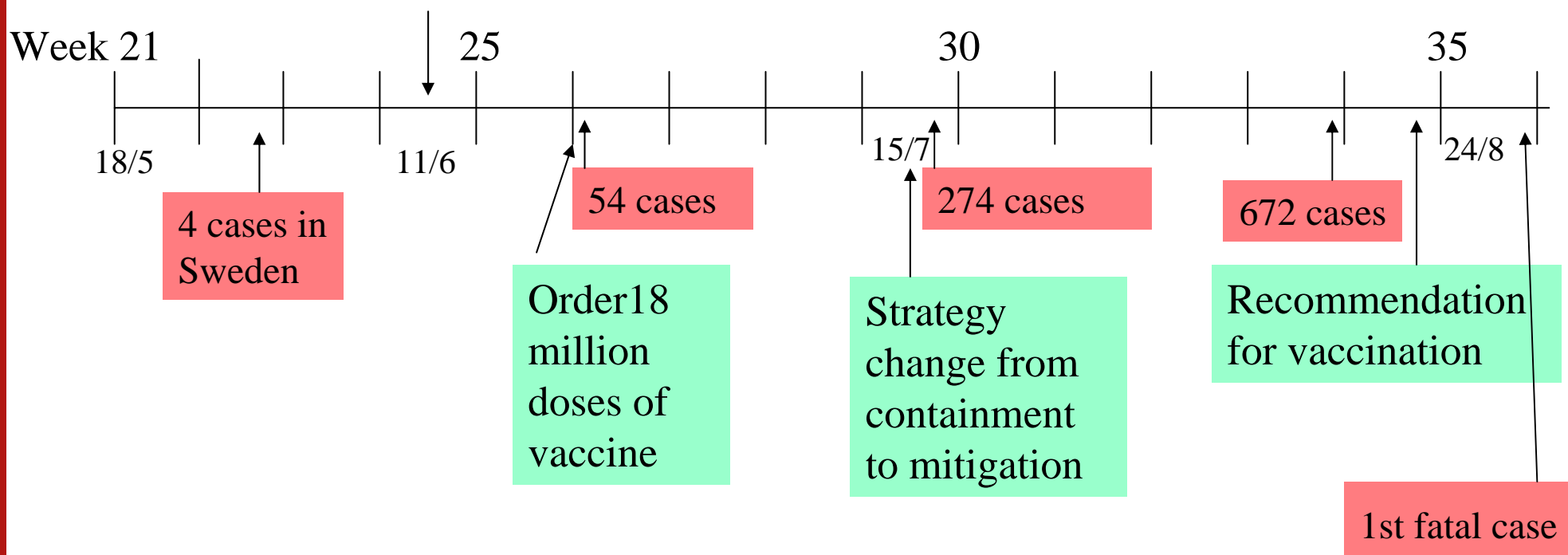


Activities and measures taken the first weeks

- Week 18 and 19
 - Daily telephone meetings with Health Security Committee, EU
 - Daily telephone meetings with informants from the national authorities, County Administrative Boards and County Councils.
 - Frequent telephone meetings with County medical officers
 - National Pandemic Group meetings
 - First FAQ on joint internet information site www.krisinformation.se
 - A joint call centre opens (922 telephone calls 3/5-11/5)
 - Information poster to airports and ports
 - Information produced and distributed
 - to the health care
 - to the public
 - Preparation for distribution of contingency storage of antiviral drugs

Pandemic influenza A(H1N1) week 21-35

WHO
phase 6



Situation in Sweden

- Moderate spread in Sweden (24th of August are approximately 20 % of confirmed cases infected in Sweden)
- Impact on health care are yet low, except on ECMO unit
- Preparations for vaccination of the whole population
- Preparations for a information campaign about the vaccination

Cases in Sweden

Confirmed and reported cases	23/8 756	1/9 915
Infected in Sweden	155 (20,5%)	
Hospitalised	39 (5%)	49
ECMO/ICU	4 (0,5%)	5
Fatal cases	0	1